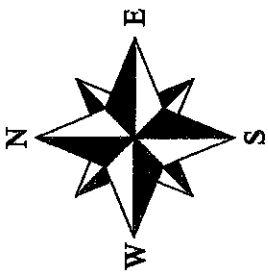
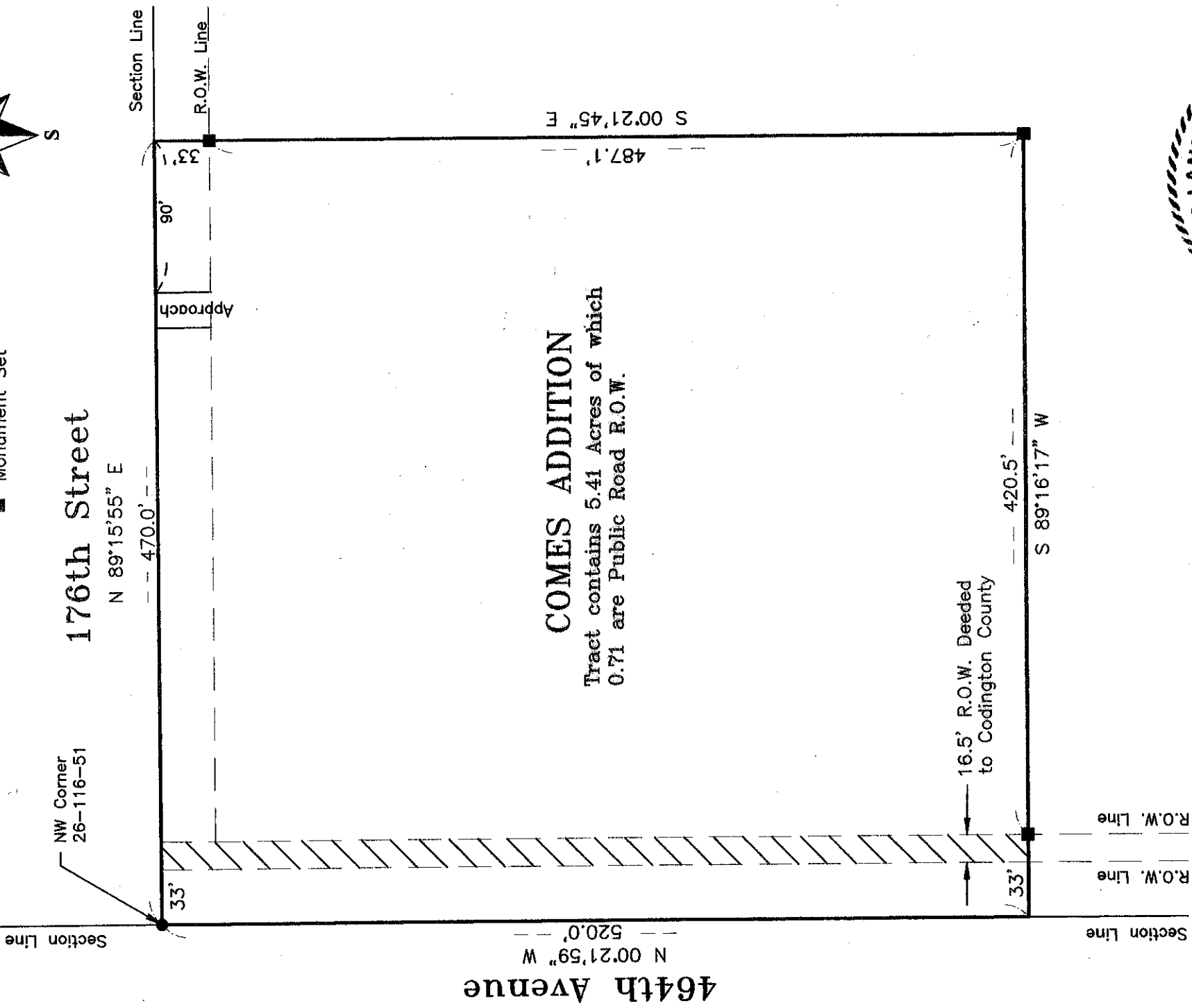


Comes Addition

Located in the Northwest Quarter of Section 26, Township 116 North, Range 51 West of the 5th P.M., Codington County, South Dakota.



August 2022
Scale: 1"=80'
● Monument Recovered
■ Monument Set



464th Avenue

N 00°21'59" W
520.0'

NW Corner
26-116-51

176th Street

N 89°15'55" E

470.0'

33'

Section Line

90'

Approach

R.O.W. Line

S 00°21'45" E
487.1'

COMES ADDITION

Tract contains 5.41 Acres of which 0.71 are Public Road R.O.W.

16.5' R.O.W. Deeded to Codington County

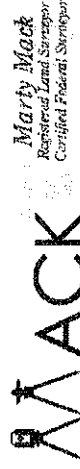
420.5'

S 89°16'17" W

Section Line

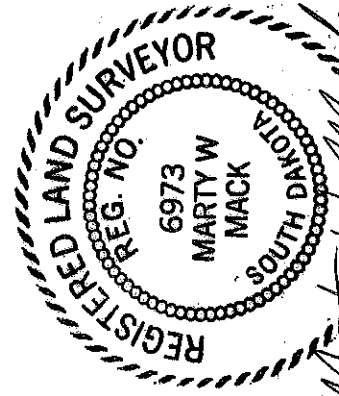
R.O.W. Line

R.O.W. Line



MACK
Land Surveying LLC

Cell: (605) 880-3108 • Phone: (605) 878-2007
808 South Maple • Watertown, SD 57201
macklandsurveying@gmail.com



Marty W. Mack
Registered Land Surveyor