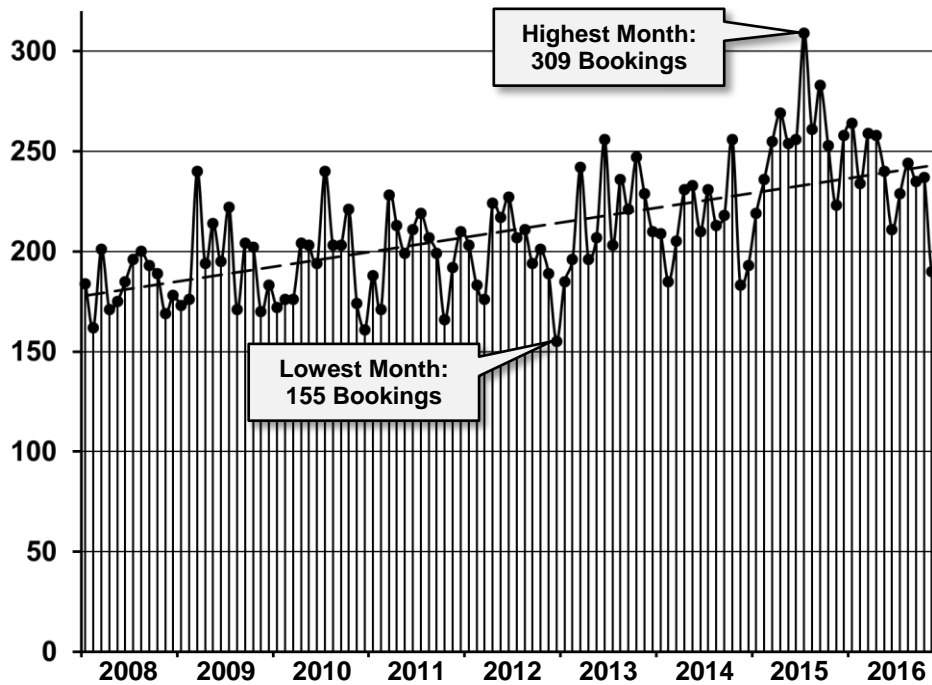


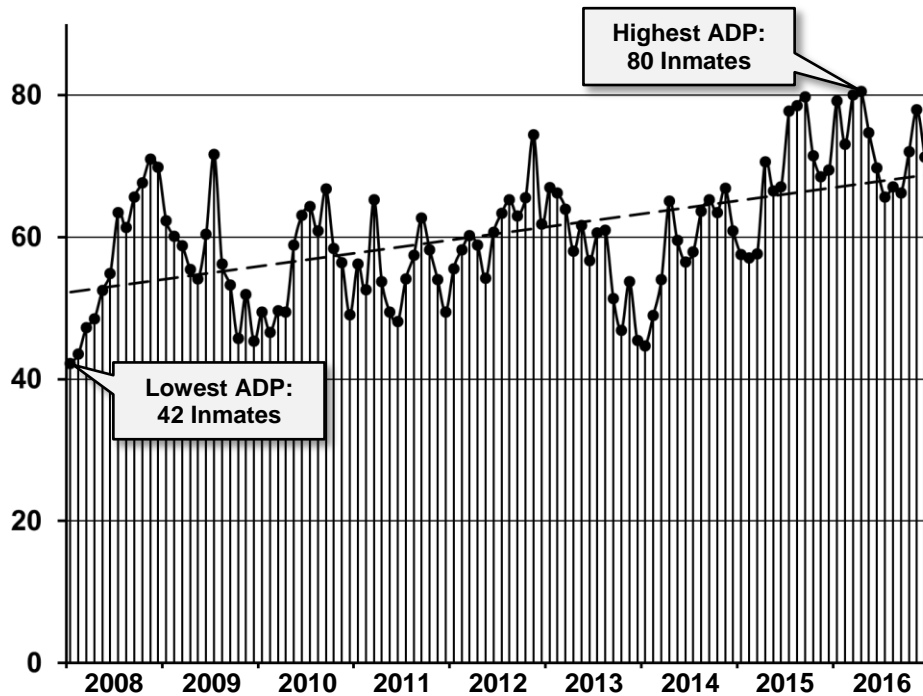
Monthly Bookings at the
 Codington County Detention Center (2008 – 2016)



Month	2008	2009	2010	2011	2012	2013	2014	2015	2016
January	184	173	172	188	203	185	209	219	264
February	162	176	176	171	183	196	185	236	234
March	201	240	176	228	176	242	205	255	259
April	171	194	204	213	224	196	231	269	258
May	175	214	203	199	217	207	233	254	240
June	185	195	194	211	227	256	210	256	211
July	196	222	240	219	207	203	231	309	229
August	200	171	203	207	211	236	213	261	244
September	193	204	203	199	194	221	218	283	235
October	189	202	221	166	201	247	256	253	237
November	169	170	174	192	189	229	183	223	190
December	178	183	161	210	155	210	193	258	219
Monthly Average	184 Bookings	195 Bookings	194 Bookings	200 Bookings	199 Bookings	219 Bookings	214 Bookings	256 Bookings	235 Bookings
Annual Total	2,203 Bookings	2,344 Bookings	2,327 Bookings	2,403 Bookings	2,387 Bookings	2,628 Bookings	2,567 Bookings	3,076 Bookings	2,830 Bookings

Source: Codington County Sheriff's Office.

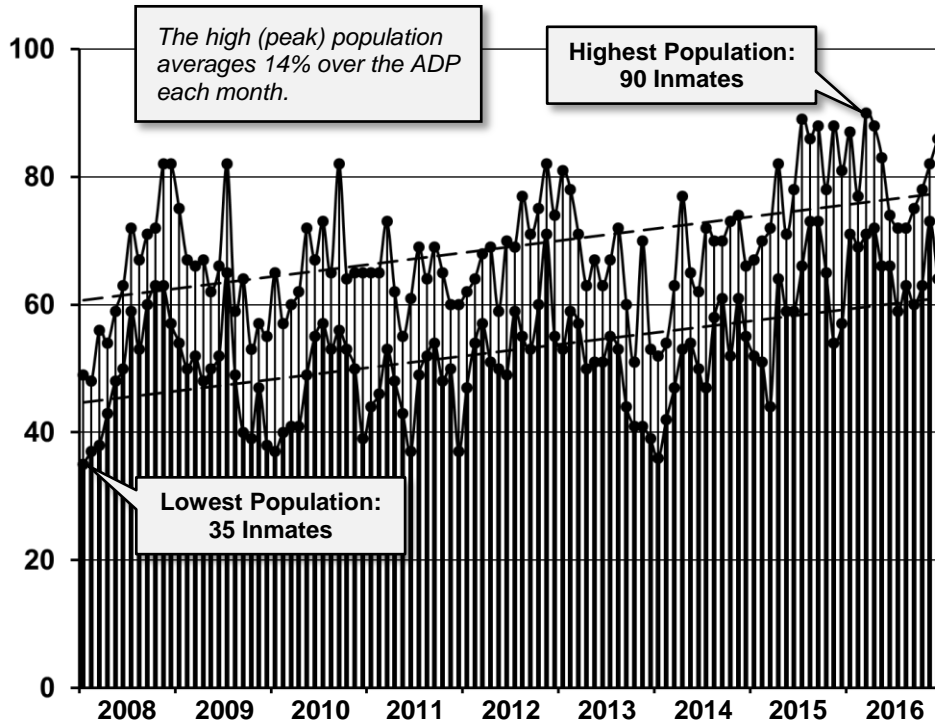
**Average Daily Population (ADP) at the
 Codington County Detention Center (2008 – 2016)**



Month	2008	2009	2010	2011	2012	2013	2014	2015	2016
January	42	62	49	56	56	67	45	58	79
February	44	60	47	53	58	66	49	57	73
March	47	59	50	65	60	64	54	58	80
April	48	55	49	54	59	58	65	71	80
May	52	54	59	49	54	62	60	67	75
June	55	60	63	48	61	57	56	67	70
July	63	72	64	54	63	61	58	78	66
August	61	56	61	57	65	61	64	79	67
September	66	53	67	63	63	51	65	80	66
October	68	46	58	58	66	47	63	71	72
November	71	52	56	54	74	54	67	69	78
December	70	45	49	49	62	45	61	69	71
Annual ADP	57 Inmates	56 Inmates	56 Inmates	55 Inmates	62 Inmates	58 Inmates	59 Inmates	68 Inmates	73 Inmates

Source: Codington County Sheriff's Office. Data includes all inmates from all jurisdictions.

**High and Low Inmate Population at the
 Codington County Detention Center (2008 – 2016)**



Month	2008	2009	2010	2011	2012	2013	2014	2015	2016
January	35 – 49	54 – 75	37 – 65	44 – 65	47 – 62	53 – 81	36 – 52	52 – 67	71 – 87
February	37 – 48	50 – 67	40 – 57	46 – 65	54 – 64	59 – 78	42 – 54	51 – 70	69 – 77
March	38 – 56	52 – 66	41 – 60	53 – 73	57 – 68	57 – 71	47 – 63	44 – 72	71 – 90
April	43 – 54	48 – 67	41 – 62	48 – 62	51 – 69	50 – 63	53 – 77	64 – 82	72 – 88
May	48 – 59	50 – 62	49 – 72	43 – 55	50 – 59	51 – 67	54 – 65	59 – 71	66 – 83
June	50 – 63	52 – 66	55 – 67	37 – 61	49 – 70	51 – 63	50 – 62	59 – 78	66 – 74
July	59 – 72	65 – 82	57 – 73	49 – 69	59 – 69	55 – 67	47 – 72	66 – 89	59 – 72
August	53 – 67	49 – 59	53 – 65	52 – 64	55 – 77	53 – 72	58 – 70	73 – 86	63 – 72
September	60 – 71	40 – 64	56 – 82	54 – 69	53 – 71	44 – 60	61 – 70	73 – 88	60 – 75
October	63 – 72	39 – 53	53 – 64	48 – 65	60 – 75	41 – 51	52 – 73	65 – 78	63 – 78
November	63 – 82	47 – 57	50 – 65	50 – 60	71 – 82	41 – 70	61 – 74	54 – 88	73 – 82
December	57 – 82	38 – 55	39 – 65	37 – 60	55 – 74	39 – 53	55 – 66	57 – 81	64 – 86
Annual Range	35 – 82 Inmates	38 – 82 Inmates	37 – 82 Inmates	37 – 73 Inmates	47 – 82 Inmates	39 – 81 Inmates	36 – 77 Inmates	44 – 89 Inmates	59 – 90 Inmates

Source: Codington County Sheriff's Office. Data includes all inmates from all jurisdictions.