

Jail Needs Assessment for Codington County, South Dakota

II. Inmate Population Trends

A. Bookings

| | |
|--|---|
| Monthly Bookings at the Codington County Detention Center (2008 – 2015) | 1 |
|--|---|

B. Average Daily Population (ADP)

1. Codington County's Inmate Population

| | |
|--|---|
| Codington County's ADP at the Codington County Detention Center (2008 – 2015) | 2 |
|--|---|

2. Other Jurisdictions' Inmate Population

| | |
|---|---|
| Other Agencies' ADP at the Codington County Detention Center (2008 – 2015) | 3 |
|---|---|

| | |
|--|---|
| Monthly Breakdown of Other Agencies' ADP at the Codington County Detention Center (2008 – 2015) | 4 |
|--|---|

| | |
|---|---|
| Annual Breakdown of Other Agencies' ADP at the Codington County Detention Center (2008 – 2015) | 7 |
|---|---|

3. Total Inmate Population

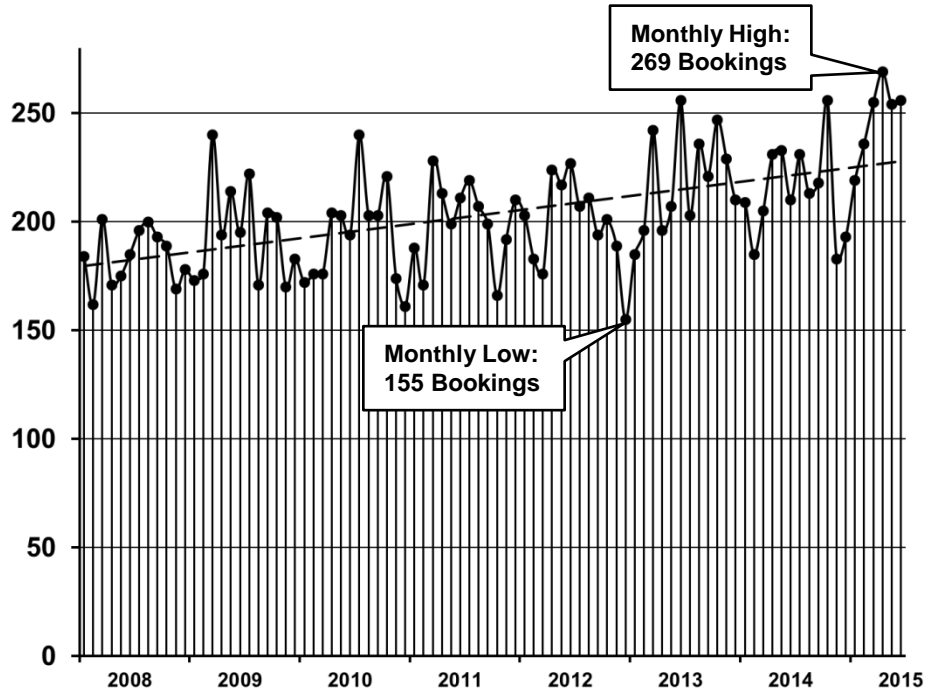
| | |
|---|---|
| Total ADP at the Codington County Detention Center (2008 – 2015) | 8 |
|---|---|

| | |
|---|---|
| Annual Breakdown of the Total ADP at the Codington County Detention Center (2008 – 2015) | 9 |
|---|---|

C. High and Low Inmate Population

| | |
|--|----|
| High and Low Inmate Population at the Codington County Detention Center (2008 – 2015) | 10 |
|--|----|

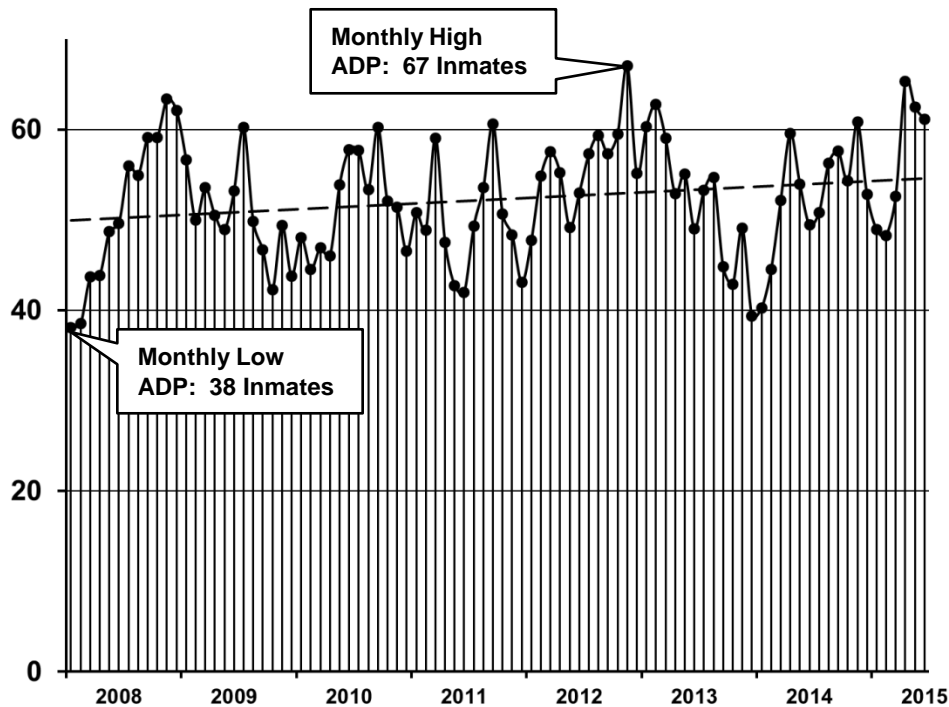
Monthly Bookings at the
 Codington County Detention Center (2008 – 2015)



| Month | 2008 | 2009 | 2010 | 2011 | 2012 | 2013 | 2014 | 2015 |
|------------------------|-----------------------|-----------------------|-----------------------|-----------------------|-----------------------|-----------------------|-----------------------|-----------------------|
| January | 184 | 173 | 172 | 188 | 203 | 185 | 209 | 219 |
| February | 162 | 176 | 176 | 171 | 183 | 196 | 185 | 236 |
| March | 201 | 240 | 176 | 228 | 176 | 242 | 205 | 255 |
| April | 171 | 194 | 204 | 213 | 224 | 196 | 231 | 269 |
| May | 175 | 214 | 203 | 199 | 217 | 207 | 233 | 254 |
| June | 185 | 195 | 194 | 211 | 227 | 256 | 210 | 256 |
| July | 196 | 222 | 240 | 219 | 207 | 203 | 231 | |
| August | 200 | 171 | 203 | 207 | 211 | 236 | 213 | |
| September | 193 | 204 | 203 | 199 | 194 | 221 | 218 | |
| October | 189 | 202 | 221 | 166 | 201 | 247 | 256 | |
| November | 169 | 170 | 174 | 192 | 189 | 229 | 183 | |
| December | 178 | 183 | 161 | 210 | 155 | 210 | 193 | |
| Monthly Average | 184 Bookings | 195 Bookings | 194 Bookings | 200 Bookings | 199 Bookings | 219 Bookings | 214 Bookings | 248 Bookings |
| Annual Total | 2,203 Bookings | 2,344 Bookings | 2,327 Bookings | 2,403 Bookings | 2,387 Bookings | 2,628 Bookings | 2,567 Bookings | 1,489 Bookings |

Source: Codington County Sheriff's Office.

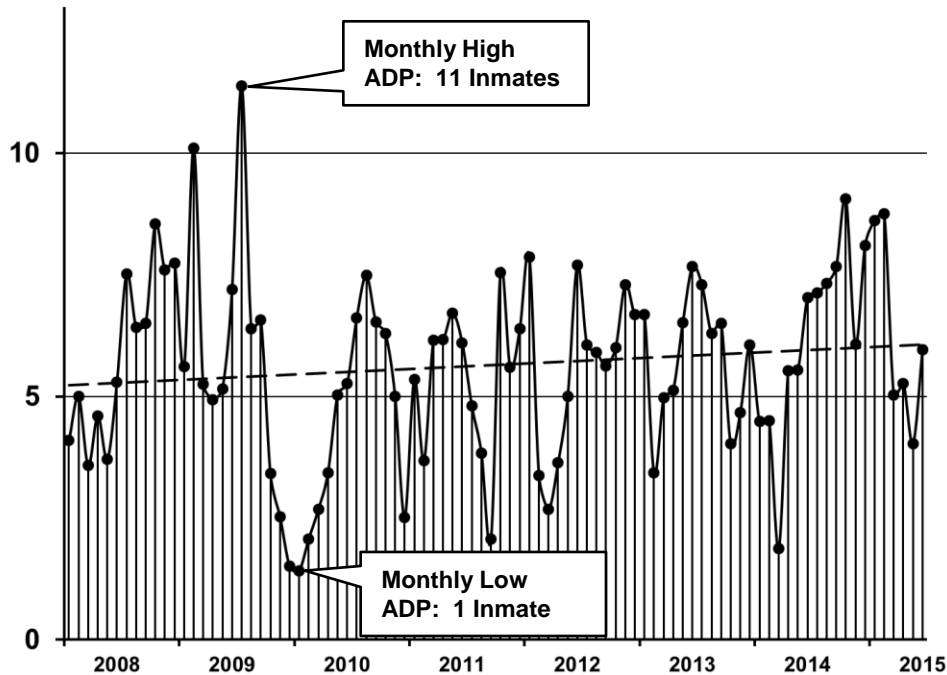
**Codington County's Average Daily Population at the
Codington County Detention Center (2008 – 2015)**



| Month | 2008 | 2009 | 2010 | 2011 | 2012 | 2013 | 2014 | 2015 |
|-------------------|-------------------|-------------------|-------------------|-------------------|-------------------|-------------------|-------------------|-------------------|
| January | 38 | 57 | 48 | 51 | 48 | 60 | 40 | 49 |
| February | 39 | 50 | 45 | 49 | 55 | 63 | 45 | 48 |
| March | 44 | 54 | 47 | 59 | 58 | 59 | 52 | 53 |
| April | 44 | 51 | 46 | 48 | 55 | 53 | 60 | 65 |
| May | 49 | 49 | 54 | 43 | 49 | 55 | 54 | 62 |
| June | 50 | 53 | 58 | 42 | 53 | 49 | 49 | 61 |
| July | 56 | 60 | 58 | 49 | 57 | 53 | 51 | |
| August | 55 | 50 | 53 | 54 | 59 | 55 | 56 | |
| September | 59 | 47 | 60 | 61 | 57 | 45 | 58 | |
| October | 59 | 42 | 52 | 51 | 60 | 43 | 54 | |
| November | 63 | 49 | 51 | 48 | 67 | 49 | 61 | |
| December | 62 | 44 | 47 | 43 | 55 | 39 | 53 | |
| Annual ADP | 51 Inmates | 50 Inmates | 52 Inmates | 50 Inmates | 56 Inmates | 52 Inmates | 53 Inmates | 57 Inmates |

Source: Codington County Sheriff's Office.

**Other Jurisdictions' Average Daily Population at the
Codington County Detention Center (2008 – 2015)**



| Month | 2008 | 2009 | 2010 | 2011 | 2012 | 2013 | 2014 | 2015 |
|-------------------|------------------|------------------|------------------|------------------|------------------|------------------|------------------|------------------|
| January | 4 | 6 | 1 | 5 | 8 | 7 | 4 | 9 |
| February | 5 | 10 | 2 | 4 | 3 | 3 | 5 | 9 |
| March | 4 | 5 | 3 | 6 | 3 | 5 | 2 | 5 |
| April | 5 | 5 | 3 | 6 | 4 | 5 | 6 | 5 |
| May | 4 | 5 | 5 | 7 | 5 | 7 | 6 | 4 |
| June | 5 | 7 | 5 | 6 | 8 | 8 | 7 | 6 |
| July | 8 | 11 | 7 | 5 | 6 | 7 | 7 | |
| August | 6 | 6 | 7 | 4 | 6 | 6 | 7 | |
| September | 7 | 7 | 7 | 2 | 6 | 7 | 8 | |
| October | 9 | 3 | 6 | 8 | 6 | 4 | 9 | |
| November | 8 | 3 | 5 | 6 | 7 | 5 | 6 | |
| December | 8 | 2 | 3 | 6 | 7 | 6 | 8 | |
| Annual ADP | 6 Inmates | 6 Inmates | 5 Inmates | 5 Inmates | 6 Inmates | 6 Inmates | 6 Inmates | 6 Inmates |

Source: Codington County Sheriff's Office.

**Monthly Breakdown of Other Jurisdictions' Average Daily Population
at the Codington County Detention Center (2008 – 2015)**

| Year | Month | Clark County | Deuel County | Hamlin County | Other Jurisdictions | TOTAL ADP |
|-------------|--------------|-------------------------|-------------------------|--------------------------|--------------------------------|----------------------|
| 2008 | January | 0.0 | 2.0 | 2.0 | 0.0 | 4.1 |
| | February | 0.2 | 1.7 | 2.8 | 0.4 | 5.0 |
| | March | 0.0 | 1.5 | 2.1 | 0.0 | 3.6 |
| | April | 1.2 | 1.7 | 1.8 | 0.0 | 4.6 |
| | May | 1.0 | 2.0 | 0.7 | 0.0 | 3.7 |
| | June | 1.6 | 3.3 | 0.4 | 0.0 | 5.3 |
| | July | 1.1 | 3.6 | 2.8 | 0.0 | 7.5 |
| | August | 1.0 | 2.5 | 2.7 | 0.2 | 6.4 |
| | September | 1.1 | 2.0 | 2.6 | 0.8 | 6.5 |
| | October | 1.4 | 3.0 | 4.0 | 0.2 | 8.5 |
| | November | 1.3 | 2.0 | 3.9 | 0.4 | 7.6 |
| | December | 1.2 | 3.5 | 2.9 | 0.1 | 7.7 |
| 2009 | January | 1.7 | 1.5 | 1.9 | 0.5 | 5.6 |
| | February | 3.1 | 4.8 | 2.3 | 0.0 | 10.1 |
| | March | 0.1 | 2.8 | 2.4 | 0.0 | 5.3 |
| | April | 0.1 | 2.1 | 2.3 | 0.5 | 4.9 |
| | May | 0.1 | 2.4 | 2.6 | 0.1 | 5.2 |
| | June | 0.2 | 4.2 | 2.6 | 0.2 | 7.2 |
| | July | 0.6 | 5.5 | 5.3 | 0.0 | 11.4 |
| | August | 0.4 | 4.0 | 2.0 | 0.0 | 6.4 |
| | September | 0.2 | 2.6 | 3.7 | 0.0 | 6.6 |
| | October | 0.0 | 3.2 | 0.2 | 0.0 | 3.4 |
| | November | 0.0 | 1.4 | 1.0 | 0.1 | 2.5 |
| | December | 0.0 | 0.9 | 0.6 | 0.0 | 1.5 |
| 2010 | January | 0.3 | 0.6 | 0.5 | 0.0 | 1.4 |
| | February | 0.2 | 0.6 | 1.3 | 0.0 | 2.1 |
| | March | 1.0 | 0.5 | 1.2 | 0.0 | 2.7 |
| | April | 0.4 | 0.8 | 1.9 | 0.3 | 3.4 |
| | May | 0.0 | 0.7 | 4.3 | 0.0 | 5.0 |
| | June | 0.1 | 2.9 | 2.3 | 0.0 | 5.3 |
| | July | 1.0 | 2.5 | 3.1 | 0.0 | 6.6 |
| | August | 1.9 | 3.1 | 2.2 | 0.4 | 7.5 |
| | September | 1.2 | 3.4 | 1.2 | 0.7 | 6.5 |

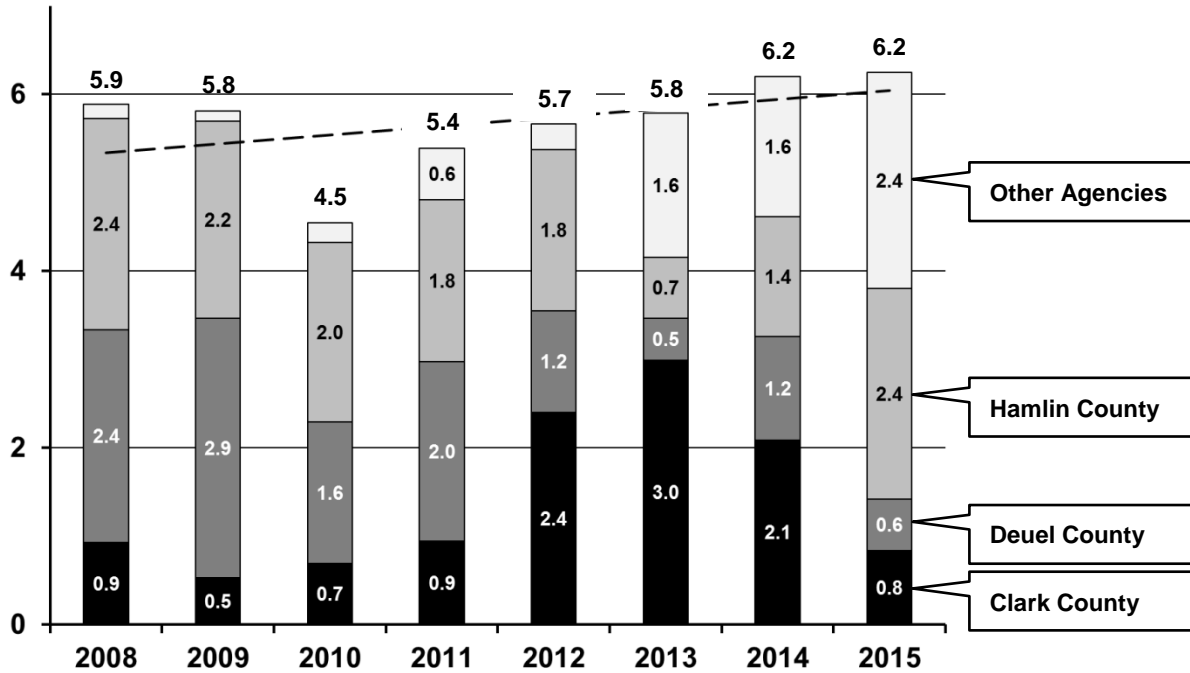
| Year | Month | Clark County | Deuel County | Hamlin County | Other Jurisdictions | TOTAL ADP |
|-------------|--------------|-------------------------|-------------------------|--------------------------|--------------------------------|----------------------|
| | October | 1.3 | 2.2 | 1.7 | 1.2 | 6.3 |
| | November | 0.9 | 1.4 | 2.7 | 0.0 | 5.0 |
| | December | 0.0 | 0.4 | 2.1 | 0.0 | 2.5 |
| 2011 | January | 0.2 | 1.0 | 4.0 | 0.2 | 5.4 |
| | February | 0.0 | 0.6 | 2.7 | 0.4 | 3.7 |
| | March | 0.4 | 1.6 | 3.5 | 0.7 | 6.2 |
| | April | 0.9 | 3.2 | 1.7 | 0.5 | 6.2 |
| | May | 1.6 | 3.4 | 1.7 | 0.0 | 6.7 |
| | June | 2.0 | 3.1 | 1.0 | 0.0 | 6.1 |
| | July | 1.8 | 1.7 | 1.3 | 0.0 | 4.8 |
| | August | 1.4 | 1.4 | 0.3 | 0.8 | 3.8 |
| | September | 1.0 | 0.6 | 0.4 | 0.0 | 2.1 |
| | October | 0.8 | 2.8 | 3.5 | 0.4 | 7.5 |
| | November | 0.3 | 2.7 | 0.6 | 2.0 | 5.6 |
| | December | 0.9 | 2.2 | 1.3 | 2.0 | 6.4 |
| 2012 | January | 1.5 | 3.8 | 2.1 | 0.5 | 7.9 |
| | February | 0.8 | 1.6 | 1.0 | 0.0 | 3.4 |
| | March | 0.9 | 1.2 | 0.5 | 0.2 | 2.7 |
| | April | 0.7 | 0.8 | 1.7 | 0.5 | 3.6 |
| | May | 0.9 | 1.1 | 2.2 | 0.8 | 5.0 |
| | June | 3.1 | 0.5 | 3.0 | 1.1 | 7.7 |
| | July | 3.8 | 0.8 | 1.4 | 0.0 | 6.1 |
| | August | 2.7 | 1.5 | 1.6 | 0.1 | 5.9 |
| | September | 3.0 | 1.1 | 1.3 | 0.2 | 5.6 |
| | October | 3.6 | 0.8 | 1.6 | 0.0 | 6.0 |
| | November | 4.5 | 0.1 | 2.7 | 0.0 | 7.3 |
| | December | 3.3 | 0.4 | 2.9 | 0.2 | 6.7 |
| 2013 | January | 3.1 | 0.2 | 2.2 | 1.2 | 6.7 |
| | February | 1.4 | 0.3 | 1.1 | 0.6 | 3.4 |
| | March | 2.3 | 0.3 | 1.6 | 0.8 | 5.0 |
| | April | 3.8 | 0.4 | 0.3 | 0.6 | 5.1 |
| | May | 3.7 | 0.1 | 0.8 | 2.0 | 6.5 |
| | June | 4.7 | 1.3 | 0.2 | 1.5 | 7.7 |
| | July | 4.6 | 0.3 | 0.3 | 2.1 | 7.3 |
| | August | 3.9 | 0.3 | 0.4 | 1.6 | 6.3 |
| | September | 3.1 | 0.3 | 0.2 | 3.0 | 6.5 |
| | October | 1.4 | 0.6 | 0.1 | 1.9 | 4.0 |

| Year | Month | Clark County | Deuel County | Hamlin County | Other Jurisdictions | TOTAL ADP |
|-------------|--------------|---------------------|---------------------|----------------------|----------------------------|------------------|
| | November | 1.8 | 0.8 | 0.5 | 1.5 | 4.7 |
| | December | 2.0 | 0.9 | 0.5 | 2.6 | 6.1 |
| 2014 | January | 1.2 | 1.3 | 0.8 | 1.1 | 4.5 |
| | February | 1.4 | 1.0 | 0.5 | 1.6 | 4.5 |
| | March | 1.0 | 0.1 | 0.6 | 0.2 | 1.9 |
| | April | 1.6 | 0.1 | 1.9 | 1.9 | 5.5 |
| | May | 2.0 | 1.0 | 0.7 | 1.9 | 5.5 |
| | June | 2.1 | 1.2 | 1.4 | 2.3 | 7.0 |
| | July | 2.5 | 1.5 | 0.7 | 2.4 | 7.1 |
| | August | 2.6 | 1.5 | 1.5 | 1.7 | 7.3 |
| | September | 3.5 | 0.9 | 2.2 | 1.1 | 7.7 |
| | October | 3.8 | 2.7 | 1.6 | 0.9 | 9.1 |
| | November | 1.8 | 1.1 | 1.7 | 1.4 | 6.1 |
| | December | 1.4 | 1.8 | 2.3 | 2.6 | 8.1 |
| 2015 | January | 2.1 | 0.1 | 1.9 | 4.6 | 8.6 |
| | February | 1.0 | 0.9 | 2.4 | 4.5 | 8.8 |
| | March | 0.2 | 1.2 | 2.2 | 1.5 | 5.0 |
| | April | 0.1 | 0.9 | 2.9 | 1.4 | 5.3 |
| | May | 0.1 | 0.1 | 2.7 | 1.1 | 4.0 |
| | June | 1.6 | 0.4 | 2.2 | 1.7 | 6.0 |
| | July | | | | | |
| | August | | | | | |
| | September | | | | | |
| | October | | | | | |
| | November | | | | | |
| | December | | | | | |

| | | | | | |
|-----------------|-----|-----|-----|-----|-------------|
| Average: | 1.5 | 1.5 | 1.7 | 0.9 | 5.6 |
| High: | 4.7 | 5.5 | 5.3 | 4.6 | 11.4 |
| Low: | 0.0 | 0.1 | 0.1 | 0.0 | 1.4 |

Source: Codington County Sheriff's Office. Billing to Other Agencies Reports.

**Annual Breakdown of Other Jurisdictions' Average Daily Population
 at the Codington County Detention Center (2008 – 2015)**

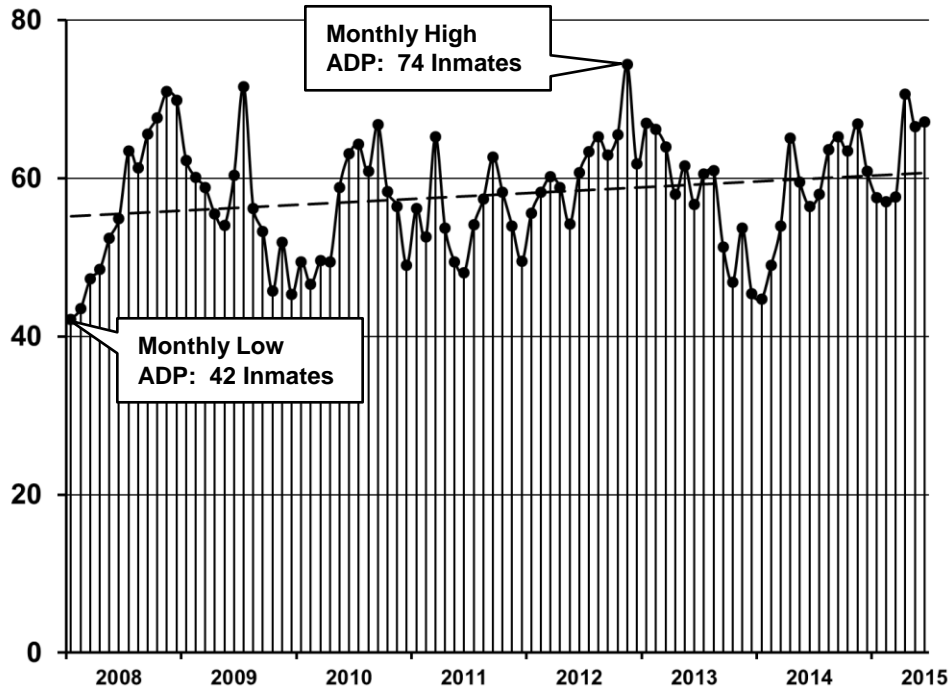


| Jurisdiction | 2008 | 2009 | 2010 | 2011 | 2012 | 2013 | 2014 | 2015 Jan – June |
|---------------------|-----------------------|-----------------------|-----------------------|-----------------------|-----------------------|-----------------------|-----------------------|-----------------------|
| Clark County | 0.9 | 0.5 | 0.7 | 0.9 | 2.4 | 3.0 | 2.1 | 0.8 |
| Deuel County | 2.4 | 2.9 | 1.6 | 2.0 | 1.2 | 0.5 | 1.2 | 0.6 |
| Hamlin County | 2.4 | 2.2 | 2.0 | 1.8 | 1.8 | 0.7 | 1.4 | 2.4 |
| Other Jurisdictions | 0.2 | 0.1 | 0.2 | 0.6 | 0.3 | 1.6 | 1.6 | 2.4 |
| Total | 5.9 Inmates | 5.8 Inmates | 4.5 Inmates | 5.4 Inmates | 5.7 Inmates | 5.8 Inmates | 6.2 Inmates | 6.2 Inmates |

| Jurisdiction | 2008 | 2009 | 2010 | 2011 | 2012 | 2013 | 2014 | 2015 Jan – June |
|---------------------|-------------|-------------|-------------|-------------|-------------|-------------|-------------|--------------------|
| Clark County | 16% | 9% | 15% | 18% | 42% | 52% | 34% | 13% |
| Deuel County | 41% | 51% | 35% | 38% | 20% | 8% | 19% | 9% |
| Hamlin County | 41% | 38% | 45% | 34% | 32% | 12% | 22% | 38% |
| Other Jurisdictions | 3% | 2% | 5% | 11% | 5% | 28% | 26% | 39% |
| Total | 100% | 100% | 100% | 100% | 100% | 100% | 100% | 100% |

Source: Codington County Sheriff's Office.

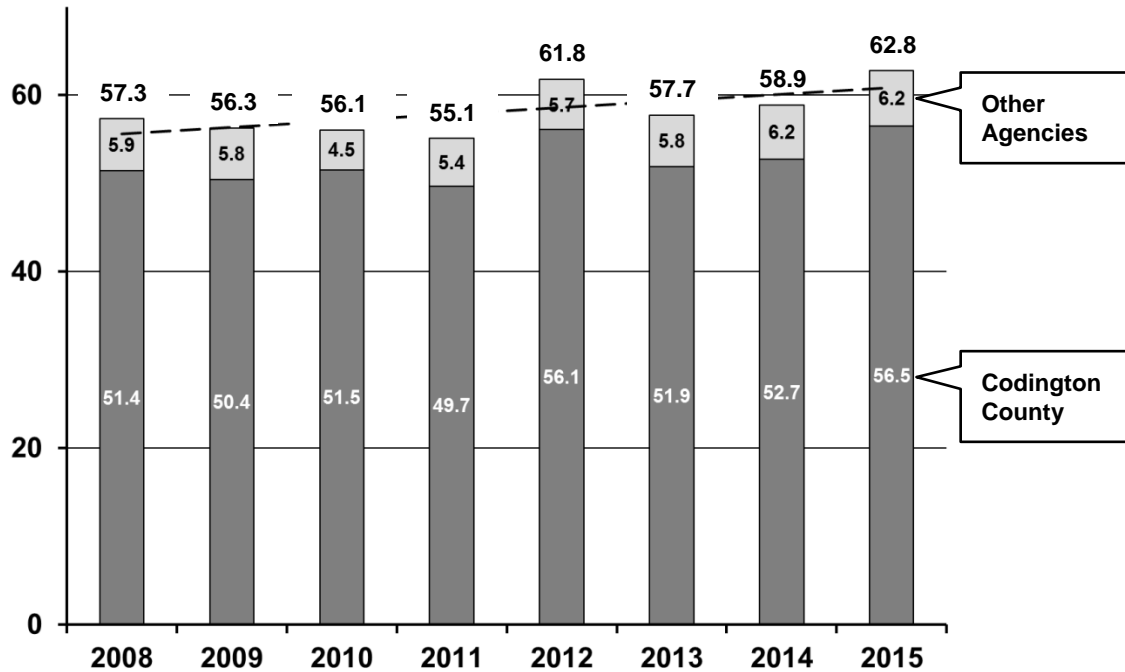
**Total Average Daily Population at the
Codington County Detention Center (2008 – 2015)**



| Month | 2008 | 2009 | 2010 | 2011 | 2012 | 2013 | 2014 | 2015 |
|-------------------|-------------------|-------------------|-------------------|-------------------|-------------------|-------------------|-------------------|-------------------|
| January | 42 | 62 | 49 | 56 | 56 | 67 | 45 | 58 |
| February | 44 | 60 | 47 | 53 | 58 | 66 | 49 | 57 |
| March | 47 | 59 | 50 | 65 | 60 | 64 | 54 | 58 |
| April | 48 | 55 | 49 | 54 | 59 | 58 | 65 | 71 |
| May | 52 | 54 | 59 | 49 | 54 | 62 | 60 | 67 |
| June | 55 | 60 | 63 | 48 | 61 | 57 | 56 | 67 |
| July | 63 | 72 | 64 | 54 | 63 | 61 | 58 | |
| August | 61 | 56 | 61 | 57 | 65 | 61 | 64 | |
| September | 66 | 53 | 67 | 63 | 63 | 51 | 65 | |
| October | 68 | 46 | 58 | 58 | 66 | 47 | 63 | |
| November | 71 | 52 | 56 | 54 | 74 | 54 | 67 | |
| December | 70 | 45 | 49 | 49 | 62 | 45 | 61 | |
| Annual ADP | 57 Inmates | 56 Inmates | 56 Inmates | 55 Inmates | 62 Inmates | 58 Inmates | 59 Inmates | 63 Inmates |

Source: Codington County Sheriff's Office.

**Annual Breakdown of the Total Average Daily Population
 at the Codington County Detention Center (2008 – 2015)**

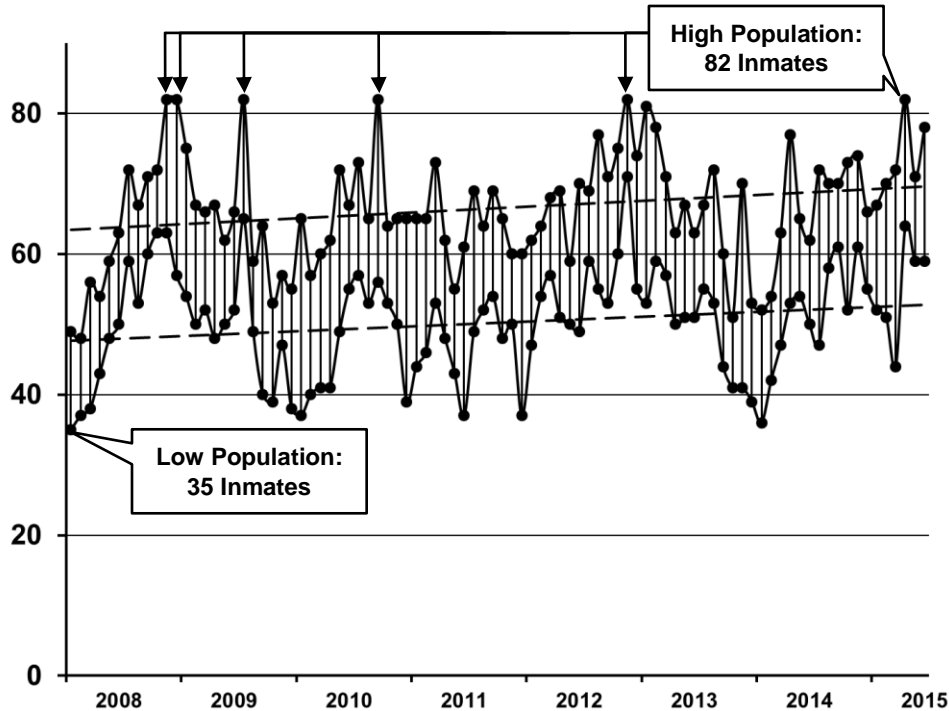


| Jurisdiction | 2008 | 2009 | 2010 | 2011 | 2012 | 2013 | 2014 | 2015 |
|---------------------|-------------|-------------|-------------|-------------|-------------|-------------|-------------|-------------|
| Codington County | 51.4 | 50.4 | 51.5 | 49.7 | 56.1 | 51.9 | 52.7 | 56.5 |
| Other Jurisdictions | 5.9 | 5.8 | 4.5 | 5.4 | 5.7 | 5.8 | 6.2 | 6.2 |
| Total | 57.3 | 56.3 | 56.1 | 55.1 | 61.8 | 57.7 | 58.9 | 62.8 |

| Jurisdiction | 2008 | 2009 | 2010 | 2011 | 2012 | 2013 | 2014 | 2015 |
|---------------------|-------------|-------------|-------------|-------------|-------------|-------------|-------------|-------------|
| Codington County | 10% | 10% | 8% | 10% | 9% | 10% | 11% | 10% |
| Other Jurisdictions | 90% | 90% | 92% | 90% | 91% | 90% | 89% | 90% |
| Total | 100% | 100% | 100% | 100% | 100% | 100% | 100% | 100% |

Source: Codington County Sheriff's Office.

**High and Low Inmate Population at the
 Codington County Detention Center (2008 – 2015)**



| Month | 2008 | 2009 | 2010 | 2011 | 2012 | 2013 | 2014 | 2015 |
|---------------------|------------------------|------------------------|------------------------|------------------------|------------------------|------------------------|------------------------|------------------------|
| January | 35 – 49 | 54 – 75 | 37 – 65 | 44 – 65 | 47 – 62 | 53 – 81 | 36 – 52 | 52 – 67 |
| February | 37 – 48 | 50 – 67 | 40 – 57 | 46 – 65 | 54 – 64 | 59 – 78 | 42 – 54 | 51 – 70 |
| March | 38 – 56 | 52 – 66 | 41 – 60 | 53 – 73 | 57 – 68 | 57 – 71 | 47 – 63 | 44 – 72 |
| April | 43 – 54 | 48 – 67 | 41 – 62 | 48 – 62 | 51 – 69 | 50 – 63 | 53 – 77 | 64 – 82 |
| May | 48 – 59 | 50 – 62 | 49 – 72 | 43 – 55 | 50 – 59 | 51 – 67 | 54 – 65 | 59 – 71 |
| June | 50 – 63 | 52 – 66 | 55 – 67 | 37 – 61 | 49 – 70 | 51 – 63 | 50 – 62 | 59 – 78 |
| July | 59 – 72 | 65 – 82 | 57 – 73 | 49 – 69 | 59 – 69 | 55 – 67 | 47 – 72 | |
| August | 53 – 67 | 49 – 59 | 53 – 65 | 52 – 64 | 55 – 77 | 53 – 72 | 58 – 70 | |
| September | 60 – 71 | 40 – 64 | 56 – 82 | 54 – 69 | 53 – 71 | 44 – 60 | 61 – 70 | |
| October | 63 – 72 | 39 – 53 | 53 – 64 | 48 – 65 | 60 – 75 | 41 – 51 | 52 – 73 | |
| November | 63 – 82 | 47 – 57 | 50 – 65 | 50 – 60 | 71 – 82 | 41 – 70 | 61 – 74 | |
| December | 57 – 82 | 38 – 55 | 39 – 65 | 37 – 60 | 55 – 74 | 39 – 53 | 55 – 66 | |
| Annual Range | 35 – 82 Inmates | 38 – 82 Inmates | 37 – 82 Inmates | 37 – 73 Inmates | 47 – 82 Inmates | 39 – 81 Inmates | 36 – 77 Inmates | 44 – 82 Inmates |

Source: Codington County Sheriff's Office.